

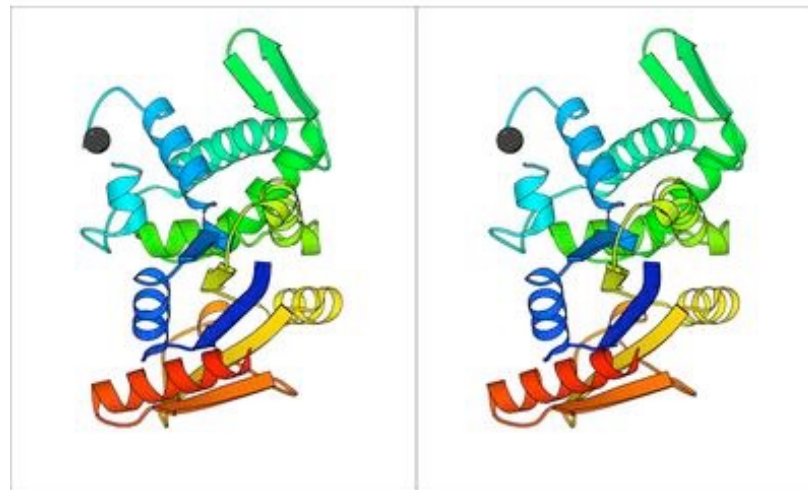
Can you see in stereo?

Resize the image so the blue arrow is 60mm

54-74 mm depending on the pupil distance of your eyes.



Relax your eyes and gaze into the distance through the image

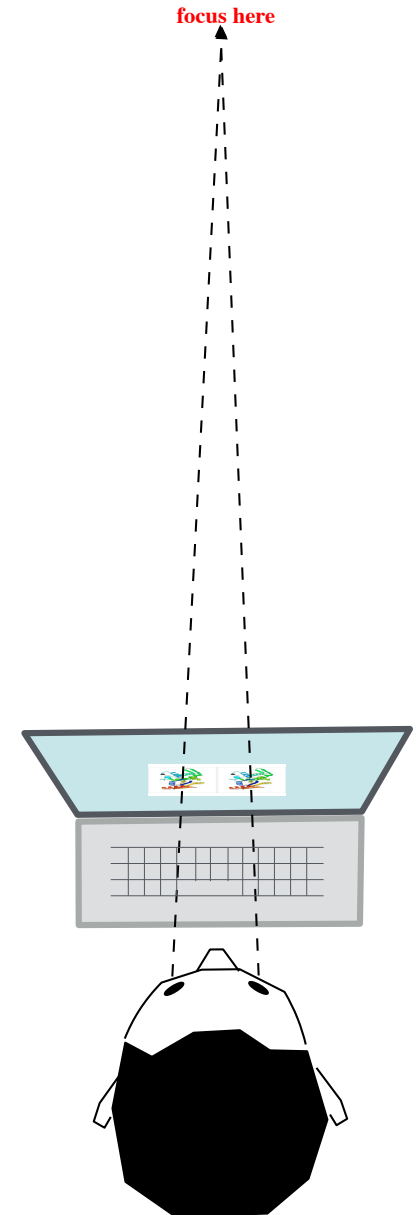


↑
left eye
focuses here

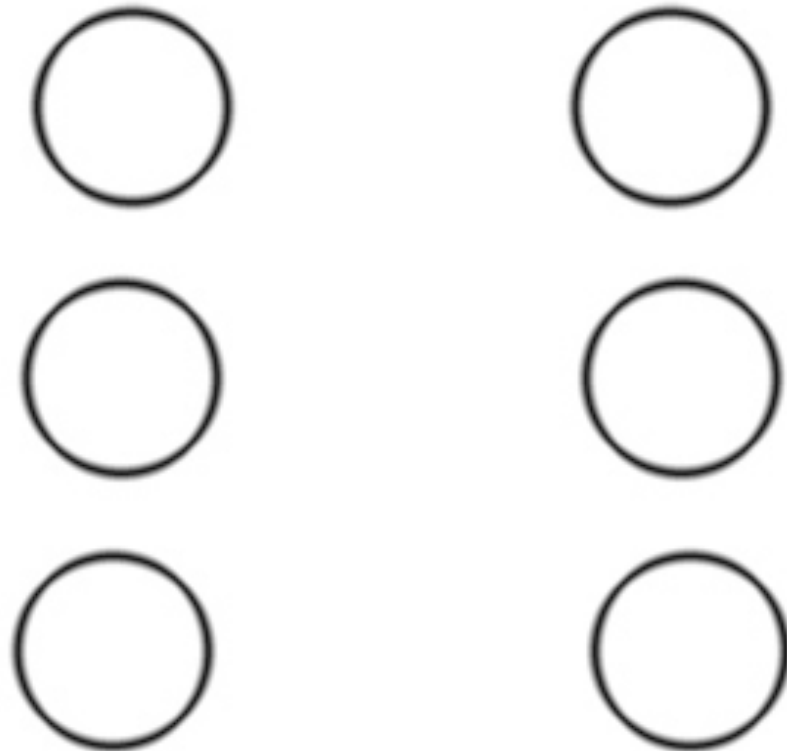
↑
right eye
focuses here

Focus near,
far, near, far,
near, far...
Then look at
the image.
Focus near,
then far.
Allow the
images to
come into
focus.

Your brain is being tricked into thinking the image is bigger, farther away.
Initially blurry, the lenses of your eyes will pull it into focus.

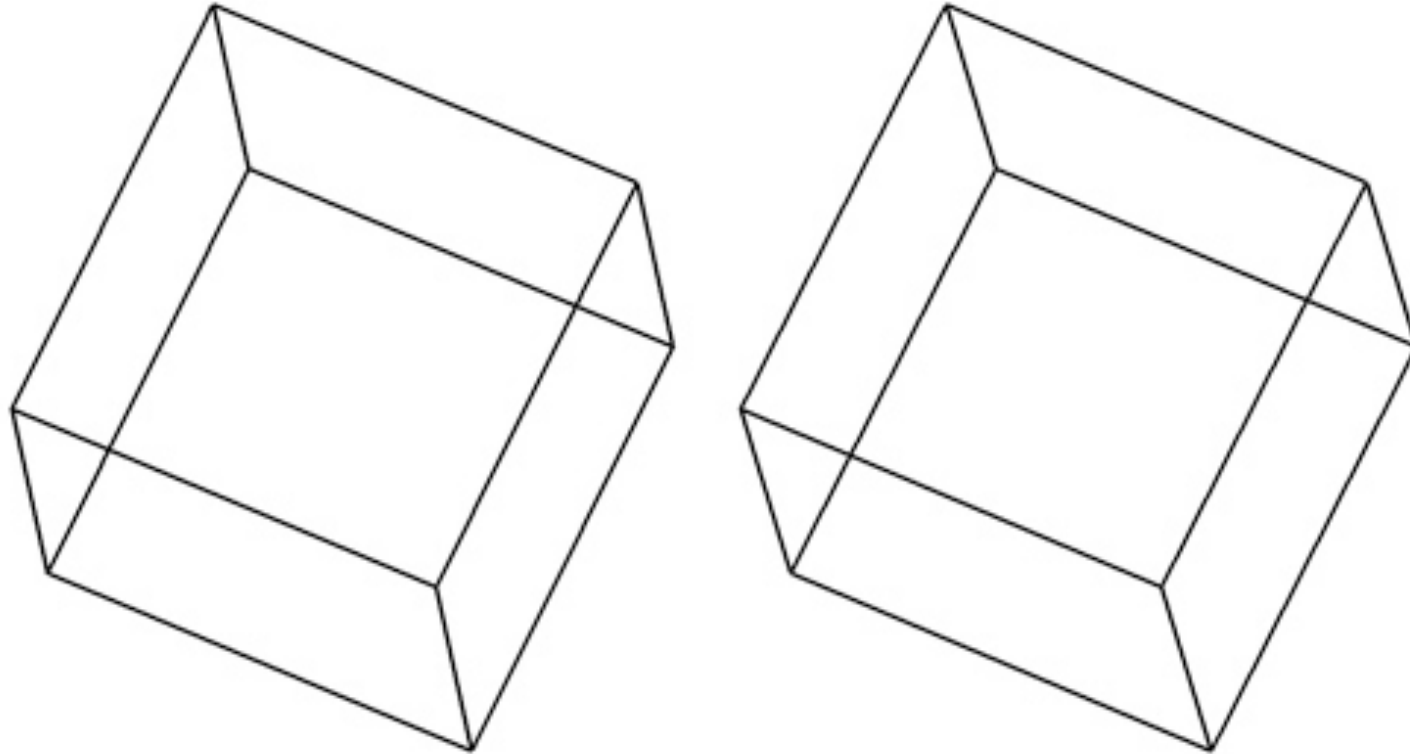


Practice seeing in 3D



which circle is in front? (top, middle, bottom) ²

Practice seeing in 3D



which side is higher, front or back? (front, back)

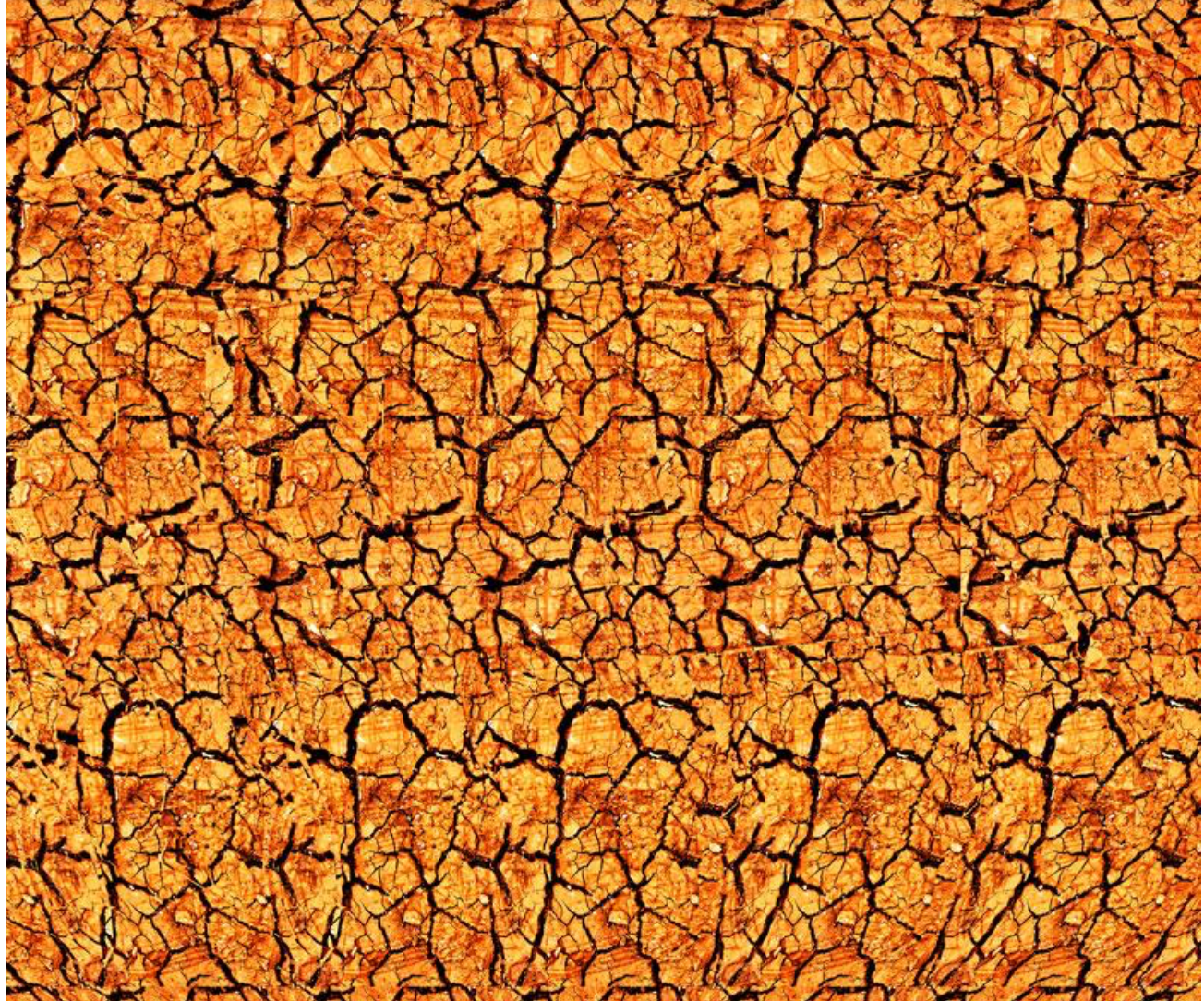
WHAT MOVIE?

hidden-3d.com hidden-3d.com hidden-3d.com hidden-3d.com

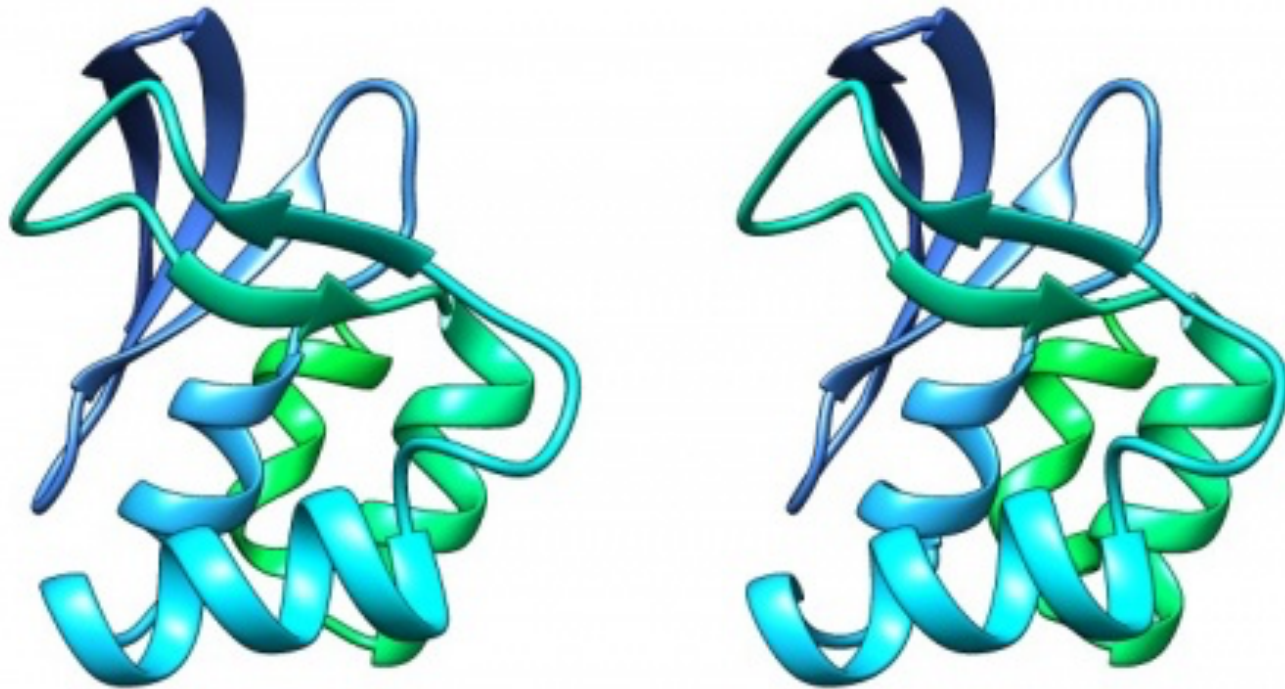


WHAT MOVIE?

hidden-3d.com hidden-3d.com hidden-3d.com hidden-3d.com hidden-3d.com

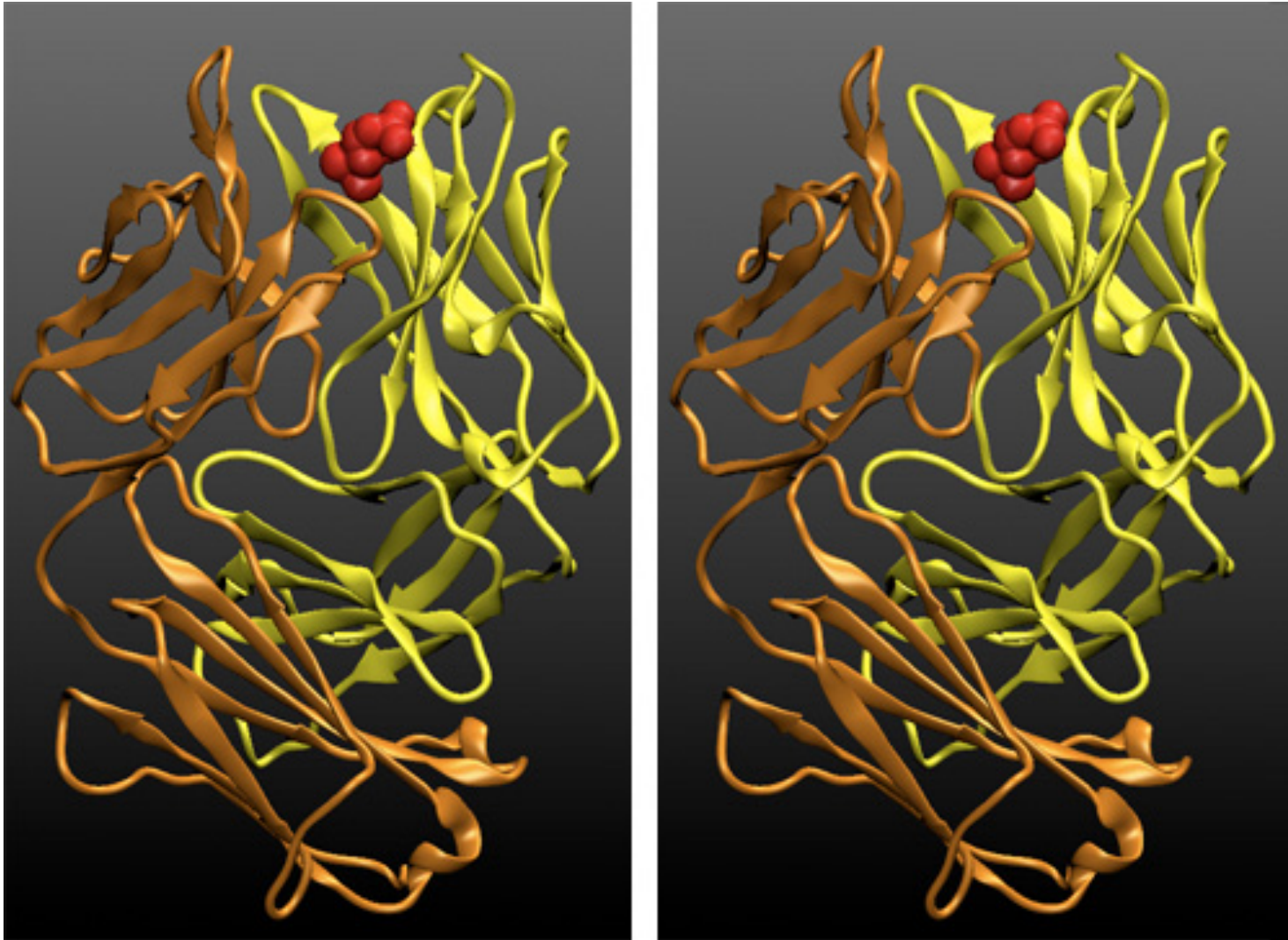


1BM8



Which way is the dark turn bending? (away, toward)

An antibody Fab and its hapten



How many beta strands in each domain?